

A PLAT OF  
**TORY PINES**  
 AT HERITAGE RIDGE, A P.U.D.

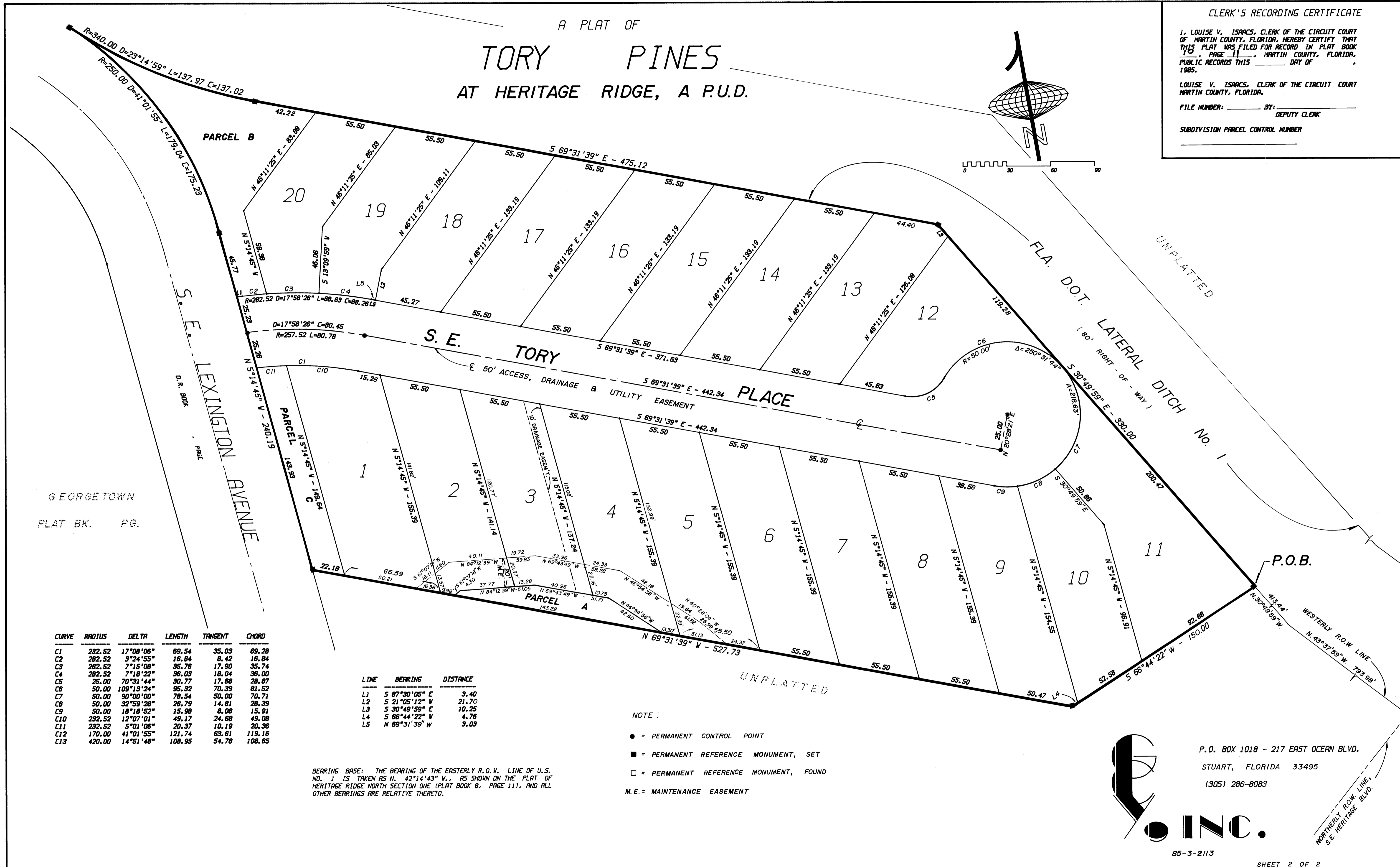
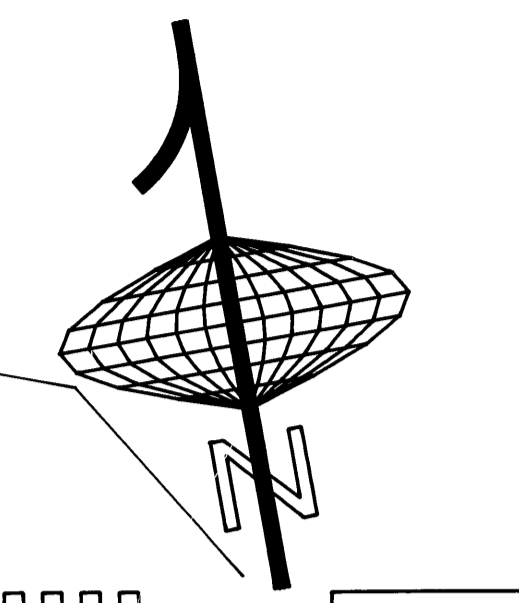
CLERK'S RECORDING CERTIFICATE

I, LOUISE V. ISPARCS, CLERK OF THE CIRCUIT COURT OF MARTIN COUNTY, FLORIDA, HEREBY CERTIFY THAT THIS PLAT WAS FILED FOR RECORD IN PLAT BOOK 115, PAGE 11, MARTIN COUNTY, FLORIDA, PUBLIC RECORDS THIS DAY OF 1985.

LOUISE V. ISPARCS, CLERK OF THE CIRCUIT COURT MARTIN COUNTY, FLORIDA.

FILE NUMBER: \_\_\_\_\_ BY: \_\_\_\_\_ DEPUTY CLERK

SUBDIVISION PARCEL CONTROL NUMBER \_\_\_\_\_



GEORGETOWN  
 PLAT BK. PG.

CURVE	RADIUS	DELTA	LENGTH	TANGENT	CHORD
C1	232.52	17°08'06"	69.54	35.03	69.28
C2	262.52	3°24'55"	16.84	8.42	16.84
C3	262.52	7°15'08"	35.76	17.90	35.74
C4	262.52	7°18'22"	36.03	18.04	36.00
C5	25.00	70°31'44"	30.77	17.68	28.87
C6	50.00	109°13'24"	95.32	70.39	81.52
C7	50.00	90°00'00"	78.54	50.00	70.71
C8	50.00	32°59'28"	26.79	14.81	28.39
C9	50.00	18°18'52"	15.98	8.06	15.91
C10	232.52	12°07'01"	49.17	24.68	49.08
C11	232.52	5°01'08"	20.37	10.19	20.36
C12	170.00	41°01'55"	121.74	63.61	119.16
C13	420.00	14°51'48"	108.95	54.78	108.65

LINE	BEARING	DISTANCE
L1	S 87°30'05" E	3.40
L2	S 21°05'12" V	21.70
L3	S 30°49'59" E	10.25
L4	S 66°44'22" V	4.76
L5	N 69°31'39" W	3.03

BEARING BASE: THE BEARING OF THE EASTERLY R.O.V. LINE OF U.S. NO. 1 IS TAKEN AS N. 42°14'43" V., AS SHOWN ON THE PLAT OF HERITAGE RIDGE NORTH SECTION ONE (PLAT BOOK 8, PAGE 11), AND ALL OTHER BEARINGS ARE RELATIVE THERETO.

- NOTE:
- = PERMANENT CONTROL POINT
  - = PERMANENT REFERENCE MONUMENT, SET
  - = PERMANENT REFERENCE MONUMENT, FOUND
  - M.E. = MAINTENANCE EASEMENT

P.O. BOX 1018 - 217 EAST OCEAN BLVD.  
 STUART, FLORIDA 33495  
 (305) 286-8083